

EXHIBIT A

PETITION FOR MAINTENANCE AND IMPROVEMENT PURSUANT TO CHAPTER 20 OF ACT 40 OF THE PUBLIC ACTS OF MICHIGAN, 1956, AS AMENDED

KNAPP'S CORNER DRAIN

TO THE KENT COUNTY DRAIN COMMISSIONER:

The undersigned public corporations in the State of Michigan, namely the City of Grand Rapids and the Charter Township of Grand Rapids, hereby petitions to (1) make improvements to and conduct maintenance and extend the Knapp's Corner Drain, and (2) consolidate Leonard-Leffingwell Drain and Leffingwell Drain as part of the Knapp's Corner Drain, as more fully described on Exhibit A attached hereto and made a part hereof (the "Drain Project"), wholly located and established in the City of Grand Rapids and the Charter Township of Grand Rapids in the County of Kent, State of Michigan, as provided in Chapter 20 of the of Act 40 of the Public Acts of Michigan, 1956, as amended, (the "Drain Code").

The Drain Project is necessary for the public health.

This petition is filed pursuant to the provisions of Chapter 20 of the Drain Code.

It is understood that the cost of the Drain Project is to be wholly assessed against public corporations, including the signatory petitioners.

A certified copy of the Resolution of the governing body of the City of Grand Rapids and the Charter Township of Grand Rapids authorizing the execution of the Petition is hereby attached.

~~CITY OF GRAND RAPIDS~~
CITY OF GRAND RAPIDS


E507110D951A4E2...

Rosalynn Bliss, Mayor

1/10/2023

Date

~~CITY OF GRAND RAPIDS~~
CITY OF GRAND RAPIDS

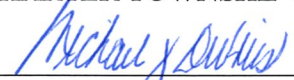

D9F73BB4D3CD44E...

Joel Hondorp, Clerk
City of Grand Rapids

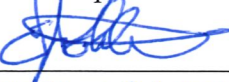
1/10/2023

Date

CHARTER TOWNSHIP OF GRAND RAPIDS


MICHAEL J. DeBRIES, Supervisor
Grand Rapids Charter Township

Date January 16, 2023


EDWARD J. ROBBETTE Clerk
Grand Rapids Charter Township

Date Jan 16, 2023

EXHIBIT A

DESCRIPTION OF THE DRAIN PROJECT

The Drain Project will involve making improvements to and extending Knapp's Corner Drain and consolidating the Leonard-Leffingwell Drain and Leffingwell Drain, as well as providing maintenance and improvements to the Lamberton Creek Drain. Petitions to the Kent County Drain Commissioner to combine the drainage districts and construct a solution to the Knapp's Corner Drain District are provided in separate Commission items.

The proposed solution involves adding a pump station and smart controls to the existing Knapp's Corner Drain pond. The pond will be connected via force main to a new pond system to be located at the southern portion of the Kent ISD property to be purchased. This system will also have smart controls. The proposed smart controls are intended to pump water from the existing Knapp's Corner Drain pond to the proposed Kent ISD pond system when it reaches a designated level. The pond system at Kent ISD will be constructed to hold back-to-back 100-year storms from the Knapp's Corner Drain district. The water will be held until the smart controls determine that there is capacity in the downstream drainage systems (Leffingwell and Leonard/Lamberton). The water will then be discharged at a rate to meet the capacity of the downstream drains.

92229 Result: Adopted.

Mover: O'Connor. Supporter: Reppart.

WHEREAS:

1. The City of Grand Rapids, Michigan, is a Michigan municipal entity ("City").
2. The City acting by and through its legislative body, the City Commission, recognizes that it is necessary and conducive for the public health to (1) make improvements to and provide maintenance and extend the Knapp's Corner Drain, and (2) consolidate Leonard-Leffingwell Drain and Leffingwell Drain as part of the Knapp's Corner Chapter 20 Drain, as more fully described on Exhibit A attached hereto and made a part hereof (the "Drain Project"), pursuant to Chapter 20 of Public Act 40 of Michigan, 1956, as amended ("Drain Code").
3. A portion of the lands to be benefited by the Drain Project are located within the City.
4. The City recognizes that it will be subject to assessment to pay for a percentage of the cost of the Drain Project.

RESOLVED:

1. That the City Commission authorizes and approves the filing of a petition for the Drain Project in substantially the form attached as Exhibit A.
2. That the Mayor and the City Clerk are hereby authorized to execute the petition in substantially the form attached as Exhibit A and to approve such changes in, and modifications to, the Petition consistent with this Resolution that do not materially adversely affect the City and as approved by the City Engineer and the City Attorney.
3. That all resolutions or parts of resolutions in conflict herewith shall be and the same are hereby rescinded.

I hereby certify that the foregoing is a true transcript of the action of the City Commission of the City of Grand Rapids, Michigan, in public session held December 13, 2022.



Joel H. Hondorp, City Clerk

92229 Result: Adopted.

Mover: O'Connor. Supporter: Reppart.

WHEREAS:

1. The City of Grand Rapids, Michigan, is a Michigan municipal entity ("City").
2. The City acting by and through its legislative body, the City Commission, recognizes that it is necessary and conducive for the public health to (1) make improvements to and provide maintenance and extend the Knapp's Corner Drain, and (2) consolidate Leonard-Leffingwell Drain and Leffingwell Drain as part of the Knapp's Corner Chapter 20 Drain, as more fully described on Exhibit A attached hereto and made a part hereof (the "Drain Project"), pursuant to Chapter 20 of Public Act 40 of Michigan, 1956, as amended ("Drain Code").
3. A portion of the lands to be benefited by the Drain Project are located within the City.
4. The City recognizes that it will be subject to assessment to pay for a percentage of the cost of the Drain Project.

RESOLVED:

1. That the City Commission authorizes and approves the filing of a petition for the Drain Project in substantially the form attached as Exhibit A.
2. That the Mayor and the City Clerk are hereby authorized to execute the petition in substantially the form attached as Exhibit A and to approve such changes in, and modifications to, the Petition consistent with this Resolution that do not materially adversely affect the City and as approved by the City Engineer and the City Attorney.
3. That all resolutions or parts of resolutions in conflict herewith shall be and the same are hereby rescinded.

I hereby certify that the foregoing is a true transcript of the action of the City Commission of the City of Grand Rapids, Michigan, in public session held December 13, 2022.



Joel H. Hondorp, City Clerk

**A RESOLUTION TO FILE PETITION PURSUANT TO CHAPTER 20 OF ACT 40 OF
THE PUBLIC ACTS OF MICHIGAN, 1956, AS AMENDED, REGARDING THE
KNAPP'S CORNER DRAIN IMPROVEMENTS**

At a regular meeting of the Township Board of the Charter Township of Grand Rapids, Kent County, Michigan, held at the Grand Rapids Township Hall in said Township on the 20th day of December, 2020 at 7 a.m./p.m.

PRESENT: DeVries, Mott, Robnette, Roth, Van Dyke

ABSENT: Christopoulos, Yeiter

WHEREAS, the Charter Township of Grand Rapids, Michigan, is a Michigan municipal entity ("Township"); and

WHEREAS, the Township acting by and through its legislative body, the Township Board, recognizes that it is necessary and conducive for the public health to (1) to make improvements to and extend the Knapp's Corner Drain, and (2) consolidate Leonard-Leffingwell Drain and Leffingwell Drain as part of the Knapp's Corner Drain, as more fully described on Exhibit A attached hereto and made a part hereof (the "Drain Project"), pursuant to Chapter 20 of Public Act 40 of Michigan, 1956, as amended ("Drain Code"); and

WHEREAS, a portion of the lands to be benefited by the Drain Project are located within the Township; and

WHEREAS, the Township recognizes that it will be subject to pay for a percentage of the cost of the Drain Project; and

NOW, THEREFORE BE IT RESOLVED THAT, the Township Board does authorize the filing of a petition for the Drain Project.


BE IT FURTHER RESOLVED THAT the Supervisor and the Clerk are authorized to execute the petition for the Drain Project.

ADOPTED: YEAS: DeVries, Mott, Robnette, Roth, Van Dyke

NAYS: None

STATE OF MICHIGAN)
) ss
COUNTY OF KENT)

I, the undersigned, the duly qualified and acting Clerk of the Township Board of the Charter Township of Grand Rapids, Kent County, Michigan, DO HEREBY CERTIFY that the foregoing is a true and complete copy of a resolution adopted at a regular meeting of the Township Board on the 20 day of December, 2020



Edward J. Robb Clerk
Township of Grand Rapids

EXHIBIT A

DESCRIPTION OF TENTATIVE KNAPP'S CORNER DRAIN

Knapps Corner Drain, Leffingwell Drain. and Leonard-Leffingwell Drains
Route and Course
Prepared: November 19, 2021
Joel Morgan

Knapps Corner Drain

Main Line

Commencing at the southwest corner of Section 11, Grand Rapids Township, Town 07 North, Range 11 West, thence N 1.102 E, 1637.575 feet along the West line of Section 11, thence S 89.813 E, 860.139 feet parallel to the South line of Section 11 to the Point of Beginning of this description, which is the north end of an emergency spillway for the Knapps Corner Drain retention basin. Thence through the retention basin, S 1.102 W, 176.385 feet to **Reference Point A**, thence S 1.102 W, 483.705 feet, thence N 89.813 W, 95.516 feet to a flared end section, thence N 89.431 W, 223.064 feet to a manhole and **Reference Point B**, thence N 89.212 W, 323.279 feet, thence S 41.772 W, 22 feet, thence S 0.347 W 174.156 feet to a catchbasin and **Reference Point C**, thence S 2.865 E 101.638 feet to a catchbasin and **Reference Point D**, and the Point of Ending of this description. Total length of main line of drain: 1,599.74 feet.

And also a branch commencing at **Reference Point A**, thence N 89.813 W, 94.65 feet through the retention basin to a flared end section, thence N 88.769 W, 59.71 feet to a manhole, thence S 87.154 W, 11.85 feet to a manhole and the Point of Ending of this branch. Total length of branch is 166.21 feet.

And also a branch commencing at **Reference Point B**, thence S 0.723 E, 140.66 feet, thence S 61.347 W, 209.43 feet, thence S 63.146 W, 19.22 feet, thence S 74.299 W, 139.95 feet to a catchbasin and **Reference Point C** and the Point of Ending of this description. Total length of South Branch: 509.26 feet.

Leonard-Leffingwell Drain

North Branch

Commencing at the center of Section 15, thence N 88.6379 W 1,893.98 feet, thence N 1.5827 E 372.42 feet to the **Point of Beginning**. Thence, S 20.36 degrees E, 3.54 feet thence, S 23.43 degrees E, 5.68 feet thence, S 34.99 degrees E, 6.36 feet thence, S 41.19 degrees E, 5.54 feet thence, S 59.04 degrees E, 6.07 feet thence, S 76.87 degrees E, 5.35 feet thence, N 80.96 degrees E, 7.73 feet thence, S 87.21 degrees E, 7.13 feet thence, S 73.3 degrees E, 9.06 feet thence, S 51.19 degrees E, 10.25 feet thence, S 43.92 degrees E, 6.51 feet thence, S 12.72 degrees E, 5.52 feet thence, S 24.3 degrees E, 5.91 feet thence, S 72.07 degrees E, 6.2 feet thence, N 64.09 degrees E, 6.76 feet thence, N 17.45 degrees E, 6.37 feet thence, N 63.43 degrees E, 3.11 feet thence, N 85.36 degrees E, 6.44 feet thence, S 81.67 degrees E, 7.19 feet thence, S 76.68 degrees E, 6.78 feet thence, S 69.86 degrees E, 5.55 feet thence, N 82.35 degrees E, 11.74 feet thence, N 76.08 degrees E, 20.21 feet thence, N 68.6 degrees E, 13.8 feet thence, N 78.98 degrees E, 13.62 feet thence, N 50.25 degrees E, 21.45 feet thence, N 75.28 degrees E, 24.59 feet thence, S 83.54 degrees E, 18.52 feet thence, N 89.41 degrees E, 288.12 feet thence, S 23.2 degrees E, 11.9 feet thence, S 17.5 degrees E, 15.56 feet thence, S 15.76 degrees E, 31.66 feet thence, S 19.53 degrees E, 25.7 feet thence, S 45.01 degrees E, 48.61 feet thence, S 62.98 degrees E, 44.72 feet thence, S 46.02 degrees E, 49.28 feet thence, S 88.46 degrees E, 11.41 feet thence, S 53.62 degrees E, 15.54 feet thence, S 0 degrees E, 14.06 feet thence, S 15.62 degrees E, 20.28 feet thence, S 36.27 degrees E, 14.54 feet thence, S 53.12 degrees E, 7.81 feet thence, S 30.73 degrees E, 15.32 feet thence, S 67.04 degrees E, 8.34 feet thence, N 87.23 degrees E, 16.54 feet thence, S 68.19 degrees E, 12.62 feet thence, S 58 degrees E, 14.74 feet

thence, S 70.82 degrees E, 19.03 feet thence, S 63.43 degrees E, 13.98 feet thence, S 59.94 degrees E, 17.15 feet thence, S 86.6 degrees E, 13.3 feet thence, S 34.53 degrees E, 15.17 feet thence, S 19.97 degrees E, 27.43 feet thence, S 14.42 degrees E, 28.23 feet thence, S 77.03 degrees E, 10.43 feet thence, N 83.17 degrees E, 39.34 feet thence, S 72.56 degrees E, 28.66 feet thence, S 85.25 degrees E, 9.41 feet thence, N 77.66 degrees E, 25.59 feet thence, N 66.84 degrees E, 11.9 feet thence, N 86.14 degrees E, 11.75 feet thence, S 50.7 degrees E, 6.41 feet thence, S 37.87 degrees E, 26.72 feet thence, S 80.94 degrees E, 13.96 feet thence, N 65.76 degrees E, 22.75 feet thence, N 59.04 degrees E, 23.14 feet thence, N 56.85 degrees E, 17.87 feet thence, N 39.48 degrees E, 13.45 feet thence, N 12.69 degrees E, 9.7 feet thence, N 19.1 degrees E, 16.81 feet thence, N 26.57 degrees E, 15.7 feet thence, N 4.76 degrees W, 14.7 feet thence, N 0.63 degrees W, 28.39 feet thence, N 27.23 degrees E, 12.02 feet thence, N 43.94 degrees E, 11.44 feet thence, N 63.37 degrees E, 8.19 feet thence, N 79.23 degrees E, 32.64 feet thence, N 90 degrees E, 7.93 feet thence, N 77.48 degrees E, 14.07 feet thence, N 53.14 degrees E, 10.69 feet thence, N 31.98 degrees E, 11.52 feet thence, N 29.49 degrees E, 8.06 feet thence, N 27.03 degrees E, 8.33 feet thence, N 45.44 degrees E, 12.06 feet thence, N 68.33 degrees E, 12.26 feet thence, N 72.33 degrees E, 14.69 feet thence, N 17.74 degrees E, 10.25 feet thence, N 10.78 degrees E, 8.35 feet thence, N 39.35 degrees E, 8.42 feet thence, N 38.09 degrees E, 24.97 feet thence, N 17.3 degrees E, 5.11 feet thence, N 18.89 degrees E, 12.26 feet thence, N 34.11 degrees E, 22.86 feet thence, N 52.26 degrees E, 26.19 feet thence, N 55.69 degrees E, 13.4 feet thence, N 72.09 degrees E, 17.61 feet thence, N 48.37 degrees E, 18.38 feet thence, N 17.15 degrees E, 25.88 feet thence, N 5.44 degrees E, 11.21 feet thence, N 30.32 degrees E, 7.99 feet thence, N 63.89 degrees E, 7.4 feet thence, N 76.22 degrees E, 14.21 feet thence, N 33.85 degrees E, 12.86 feet thence, N 20.43 degrees E, 9.04 feet thence, N 55.87 degrees E, 20.48 feet thence, N 65.23 degrees E, 16.68 feet thence, N 68.15 degrees E, 10.45 feet thence, S 90 degrees E, 19.03 feet thence, S 74.03 degrees E, 11.31 feet thence, S 61.65 degrees E, 27.79 feet thence, S 32 degrees E, 7.32 feet thence, S 66.16 degrees E, 7.89 feet thence, N 89.15 degrees E, 35.61 feet thence, S 87.25 degrees E, 38.55 feet thence, S 72.37 degrees E, 8.29 feet thence, N 1.9 degrees E, 238 feet thence, N 0.59 degrees E, 85 feet thence, N 1.53 degrees E, 350 feet thence, N 1.57 degrees E, 325 feet thence, N 1.67 degrees E, 375 feet to the Point of Ending at a point S 88.6379 E, 20.529 feet and N 1.5827 E 1793.472 feet from the center of Section 15. Total length of branch: 3,401.39 feet

South Branch

Commencing at the center of Section 15, thence N 88.6379 W 1,893.98 feet, thence N 1.5827 E 372.42 feet to the **Point of Beginning**. N 79.88 degrees W, 14.81 feet thence, N 76.11 degrees W, 14.75 feet thence, N 82.06 degrees W, 15.08 feet thence, S 72.61 degrees W, 18.01 feet thence, S 54.27 degrees W, 12.19 feet thence, S 20.98 degrees W, 13.57 feet thence, S 16.35 degrees W, 13.57 feet thence, S 19 degrees E, 11.2 feet thence, S 55.49 degrees E, 13.48 feet thence, S 51.98 degrees E, 12.12 feet thence, S 6.23 degrees E, 9.61 feet thence, S 36.33 degrees W, 14.65 feet thence, S 17.27 degrees W, 21.64 feet thence, S 10.82 degrees W, 24.04 feet thence, S 5.97 degrees W, 15.01 feet thence, S 12.61 degrees W, 13.52 feet thence, S 9.75 degrees W, 11.27 feet thence, S 61.07 degrees W, 15.08 feet thence, S 63.27 degrees W, 27.02 feet thence, S 70.61 degrees W, 23.01 feet thence, S 55.27 degrees W, 15.84 feet thence, S 26.57 degrees W, 13.98 feet thence, S 11.85 degrees W, 13.56 feet thence, S 39.61 degrees W, 9.8 feet thence, S 69.61 degrees W, 15.7 feet thence, S 49.95 degrees W, 11.74 feet thence, S 50.84 degrees W, 23.51 feet thence, S 86.57 degrees W, 13.04 feet thence, N 69.33 degrees W, 14.75 feet thence, S 88.44 degrees W, 19.15 feet thence, S 35.54 degrees W, 7.84 feet thence, S 13.2 degrees W, 10.83 feet thence, S 24.53 degrees E, 14.74 feet thence, S 0.74 degrees E, 10.03 feet thence, S 41.19 degrees W, 13.84 feet thence, S 84.06 degrees W, 16.36 feet thence, N 88.78 degrees W, 12.24 feet thence, S 41.55 degrees W, 7.66 feet thence, S 30.47 degrees W, 12.84 feet thence, S 3.22 degrees E, 11.61 feet thence, S 29.52 degrees E, 12.42 feet thence, S 37.04 degrees E, 17.94 feet thence, S 26.14 degrees E, 15.66 feet thence, S 14.72 degrees E, 13.33 feet thence, S 3.08 degrees W, 12.13 feet thence, S 3.81 degrees W, 17.62 feet thence, S 26.32 degrees E, 13.51 feet thence, S 22.62 degrees E, 10.16 feet thence, S 6.95 degrees E, 10.76 feet thence, S 13.94 degrees E, 18.38 feet thence, S 42.74 degrees E, 16.34 feet thence, S 67.91 degrees E, 22.03 feet thence, N 79.62 degrees E, 12.53 feet thence, N 15.95

degrees E, 6.32 feet thence, N 7.91 degrees W, 6.31 feet thence, N 24.15 degrees E, 5.52 feet thence, N 79.78 degrees E, 10.76 feet thence, S 80.43 degrees E, 15.67 feet thence, S 56.87 degrees E, 19.69 feet thence, S 55.26 degrees E, 28.94 feet thence, S 47.21 degrees E, 22.24 feet thence, S 50.11 degrees E, 28.96 feet thence, S 76.39 degrees E, 16.97 feet thence, S 90 degrees E, 15.1 feet thence, N 44.45 degrees E, 38.18 feet thence, N 32.79 degrees E, 21.48 feet thence, N 41.19 degrees E, 18.46 feet thence, N 68.63 degrees E, 12.86 feet thence, S 87.93 degrees E, 14.42 feet thence, S 54.04 degrees E, 10.94 feet thence, S 60.33 degrees E, 17.18 feet thence, S 71.1 degrees E, 20.37 feet thence, N 76.88 degrees E, 23.71 feet thence, N 74.74 degrees E, 17.82 feet thence, S 79.88 degrees E, 14.81 feet thence, S 49.47 degrees E, 14.16 feet thence, S 4.65 degrees E, 14.98 feet thence, S 39.58 degrees E, 16.89 feet thence, S 38.88 degrees E, 13.83 feet thence, S 55.78 degrees E, 20.99 feet thence, N 73.01 degrees E, 13.07 feet thence, N 31.93 degrees E, 14.11 feet thence, N 15.52 degrees E, 12.97 feet thence, N 17.99 degrees W, 14.05 feet thence, N 30.58 degrees W, 13.31 feet thence, N 7.13 degrees E, 12.6 feet thence, N 49.33 degrees E, 14.65 feet thence, N 18.47 degrees E, 26.8 feet thence, N 34.53 degrees E, 19.6 feet thence, N 25.67 degrees E, 14.83 feet thence, N 71.05 degrees E, 24.6 feet thence, S 88.07 degrees E, 263.6 feet thence, N 72.31 degrees E, 22.28 feet thence, S 67.13 degrees E, 16.2 feet thence, S 46.08 degrees E, 22.16 feet thence, S 11.69 degrees E, 7.43 feet thence, S 3.07 degrees W, 12.17 feet thence, S 1.08 degrees W, 11.5 feet thence, S 13.16 degrees W, 27.64 feet thence, S 5.71 degrees W, 23.99 feet thence, S 6.04 degrees E, 22.7 feet thence, S 36.03 degrees E, 11.81 feet thence, S 56.74 degrees E, 14.74 feet thence, S 63.45 degrees E, 15.95 feet thence, S 71.36 degrees E, 41.45 feet thence, S 70.21 degrees E, 26.48 feet thence, S 67.29 degrees E, 26.54 feet thence, S 56.89 degrees E, 14.3 feet thence, S 60.05 degrees E, 23.64 feet thence, S 37.71 degrees E, 41.56 feet thence, S 55.6 degrees E, 57.38 feet thence, S 78.93 degrees E, 37.84 feet thence, N 86.68 degrees E, 24 feet thence, S 83.42 degrees E, 27.92 feet thence, N 67.9 degrees E, 10.35 feet thence, N 20.43 degrees E, 9.68 feet thence, N 8.02 degrees E, 13.1 feet thence, N 10.85 degrees W, 21.21 feet thence, N 23.72 degrees W, 9.11 feet thence, N 6.86 degrees W, 16.33 feet thence, N 14.91 degrees E, 10.07 feet thence, N 29.93 degrees E, 24.69 feet thence, N 37.42 degrees E, 13.87 feet thence, N 41.63 degrees E, 7.81 feet thence, N 63.43 degrees E, 8.7 feet thence, N 63.98 degrees E, 5.83 feet thence, S 70.97 degrees E, 5.33 feet thence, S 21.37 degrees E, 4.29 feet thence, S 11.69 degrees E, 5.14 feet thence, S 8.26 degrees E, 23.17 feet thence, S 23.17 degrees W, 25.67 feet thence, S 19.33 degrees E, 10.49 feet thence, S 38.53 degrees E, 8.57 feet thence, S 76.35 degrees E, 10.59 feet thence, S 60.07 degrees E, 13.22 feet thence, S 59.42 degrees E, 8.87 feet thence, S 71.18 degrees E, 8.07 feet thence, S 71.11 degrees E, 6.97 feet thence, S 85.56 degrees E, 4.37 feet thence, N 24.41 degrees E, 7.84 feet thence, N 26.62 degrees E, 8.7 feet thence, N 46.44 degrees E, 8.57 feet thence, N 64.86 degrees E, 9.4 feet thence, N 78.37 degrees E, 12.05 feet thence, S 85.88 degrees E, 9.16 feet thence, S 90 degrees E, 19.45 feet thence, S 71.58 degrees E, 10.26 feet thence, S 36.88 degrees E, 16.21 feet thence, S 4.7 degrees E, 7.81 feet thence, S 26.57 degrees W, 8.7 feet thence, S 61.7 degrees W, 9.57 feet thence, S 76.57 degrees W, 13.99 feet thence, S 40.9 degrees W, 9.04 feet thence, S 13.57 degrees W, 10.36 feet thence, S 17.95 degrees E, 8.14 feet thence, S 21.79 degrees E, 6.98 feet thence, S 63.39 degrees E, 5.8 feet thence, N 78.67 degrees E, 9.92 feet thence, N 58.08 degrees E, 16.3 feet thence, S 74.41 degrees E, 7.75 feet thence, S 38.86 degrees E, 12.56 feet thence, S 45 degrees E, 4.58 feet thence, S 39.42 degrees E, 37.78 feet thence, S 39.28 degrees E, 9.22 feet thence, S 23.95 degrees E, 6.38 feet thence, S 23.62 degrees E, 11.33 feet thence, S 4.1 degrees E, 18.2 feet thence, S 9.47 degrees W, 7.9 feet thence, S 18.41 degrees W, 8.2 feet thence, S 12.1 degrees W, 18.56 feet thence, S 13.25 degrees W, 34.54 feet thence, S 1.69 degrees W, 29.35 feet thence, S 5.16 degrees E, 23.18 feet thence, S 3.6 degrees E, 27.66 feet thence, S 17.91 degrees E, 18.06 feet thence, S 25.84 degrees E, 23.94 feet thence, S 5.57 degrees E, 12.37 feet thence, S 5.38 degrees E, 28.67 feet thence, S 4.18 degrees E, 53.31 feet thence, S 8.24 degrees E, 5.58 feet to **Reference Point D**. Thence, S 3.85 degrees E, 7.47 feet thence, S 23.83 degrees E, 4.31 feet thence, S 23.72 degrees E, 13.4 feet thence, S 15.26 degrees E, 17.51 feet thence, S 15.95 degrees E, 16.43 feet thence, S 13.65 degrees E, 12.51 feet thence, S 16.75 degrees E, 18.86 feet thence, S 0 degrees W, 7.14 feet thence, S 0 degrees W, 7.13 feet thence, S 5.73 degrees W, 6.51 feet thence, S 4.59 degrees E, 16.26 feet thence, S 6.35 degrees W, 5.88 feet thence, S 9.44 degrees W, 11.83 feet thence, S 11.33 degrees W, 9.92 feet thence, S 21.86 degrees W, 3.49 feet thence, S 44.98 degrees W, 24.76 feet thence, S 53.67

degrees W, 8.11 feet thence, S 63.43 degrees W, 10.87 feet thence, S 48.81 degrees W, 7.38 feet thence, S 43.51 degrees W, 14.12 feet thence, S 30.59 degrees W, 8.13 feet thence, S 28.39 degrees W, 27.28 feet thence, S 28.4 degrees W, 27.27 feet thence, S 22.61 degrees W, 16.86 feet thence, S 22.16 degrees W, 18.91 feet thence, S 20.03 degrees W, 7.59 feet thence, S 20.29 degrees W, 9.2 feet thence, S 24.86 degrees W, 7.85 feet thence, S 8.13 degrees W, 6.14 feet thence, S 0.82 degrees E, 15.79 feet thence, S 24.16 degrees E, 10.48 feet thence, S 26.13 degrees E, 10.25 feet thence, S 8.03 degrees E, 13.68 feet thence, S 1.14 degrees E, 14.24 feet thence, S 16.26 degrees E, 10.85 feet thence, S 11.74 degrees E, 8.53 feet thence, S 4.27 degrees E, 7.29 feet thence, S 35.06 degrees E, 7.56 feet thence, S 48.81 degrees E, 5.77 feet thence, S 27.01 degrees E, 9.22 feet thence, S 36.81 degrees E, 5.32 feet thence, S 66.95 degrees E, 5.54 feet thence, S 51.59 degrees E, 15.37 feet thence, S 53.84 degrees E, 13.98 feet thence, S 84.43 degrees E, 13.41 feet thence, S 64.54 degrees E, 10.1 feet thence, S 60.52 degrees E, 8.6 feet thence, S 69.85 degrees E, 16.07 feet thence, S 64.36 degrees E, 9.03 feet thence, S 76.87 degrees E, 10.03 feet thence, N 74.63 degrees E, 14.74 feet thence, S 69.85 degrees E, 19.53 feet thence, S 79.73 degrees E, 36.95 feet thence, S 82.4 degrees E, 8.73 feet thence, N 70.26 degrees E, 5.9 feet thence, S 84.78 degrees E, 21.46 feet thence, S 73.41 degrees E, 10.64 feet thence, S 78.15 degrees E, 29.6 feet thence, N 84.45 degrees E, 7.85 feet thence, S 64.57 degrees E, 14.66 feet thence, S 84.73 degrees E, 21.09 feet thence, S 86.4 degrees E, 33.1 feet thence, N 82.84 degrees E, 16.66 feet thence, N 75.07 degrees E, 19.73 feet thence, N 86.58 degrees E, 20 feet thence, S 83.16 degrees E, 43.44 feet thence, S 86.73 degrees E, 39.93 feet to **Reference Point E** thence, S 0.51 degrees E, 138.64 feet thence, S 2.17 degrees W, 274.93 feet thence, S 89.79 degrees E, 130.64 feet to the Point of Ending at a point S 1.3709 W 1,555.05 feet and S 88.6379 E 145.04 feet from the center of Section 15. Total length of branch: 4,592.23 feet

And also a branch commencing at **Reference Point E**, thence S 65.2778 E, 46.865 feet to the Point of Ending. Total Length of branch: 46.87 feet.

And also a branch commencing at **Reference Point D**, thence S 86.95 degrees E, 13.04 feet thence, S 84.56 degrees E, 7.32 feet thence, N 79.76 degrees E, 13.67 feet thence, S 89.13 degrees E, 13.27 feet thence, S 68.49 degrees E, 13.85 feet thence, S 59.18 degrees E, 18.15 feet thence, S 73.39 degrees E, 10.33 feet thence, S 72.9 degrees E, 8.26 feet thence, S 76.95 degrees E, 7.31 feet thence, N 80.8 degrees E, 9.23 feet thence, N 58.21 degrees E, 7.25 feet thence, N 84.81 degrees E, 11.51 feet thence, N 38.7 degrees E, 6.8 feet thence, N 60.65 degrees E, 14.34 feet thence, N 85.92 degrees E, 21.93 feet thence, N 70.82 degrees E, 19.03 feet thence, N 67.69 degrees E, 16.46 feet thence, N 53.5 degrees E, 24.31 feet thence, N 74.74 degrees E, 4.45 feet thence, N 78.33 degrees E, 11.57 feet thence, S 63.48 degrees E, 5.24 feet thence, S 75.94 degrees E, 12.89 feet thence, N 83.56 degrees E, 27.91 feet thence, S 88.37 degrees E, 13.68 feet thence, N 60.49 degrees E, 7.49 feet thence, N 67.62 degrees E, 10.35 feet to **Reference Point F** and the Point of Ending of this branch. Total length of branch: 329.64 feet.

And also a branch commencing at **Reference Point F**, thence N 58.01 degrees E, 21.41 feet thence, N 86.5 degrees E, 44.35 feet thence, S 89.16 degrees E, 39 feet thence, N 52.06 degrees E, 8 feet thence, N 1.73 degrees E, 339.14 feet thence, N 4.82 degrees E, 255 feet thence, N 64.84 degrees E, 24 feet to the Point of Ending at a point N 1.58247 E 7.851 feet and S 88.6379 E, 57.539 feet from the center of Section 15. Total length of branch: 730.91 feet

Leffingwell Drain and ISD Branch

Commencing at **Reference Point F**, thence N 87.64 degrees E, 14.31 feet thence, N 83.37 degrees E, 9.02 feet thence, S 87.3 degrees E, 109.72 feet thence, S 70.4 degrees E, 9.46 feet thence, S 61.11 degrees E, 7.19 feet thence, S 53.43 degrees E, 8.38 feet thence, S 53.13 degrees E, 8.68 feet thence, N 86.91 degrees E, 8.04 feet thence, N 24.68 degrees E, 8.84 feet thence, N 27.41 degrees E, 6.6 feet thence, N 51.84 degrees E, 3.86 feet thence, N 33.34 degrees E, 9.87 feet thence, N 5.71 degrees W, 8.72 feet thence, N 61.65 degrees W, 15.54 feet thence, N 52.52 degrees W, 8.2 feet thence, N 20.77 degrees W, 6.73 feet thence, N 13.74 degrees E, 10.05 feet thence, N 59.26 degrees E, 9.34 feet thence, N 64.8 degrees E, 8.15

feet thence, N 81.38 degrees E, 7.24 feet thence, N 50.33 degrees E, 11.56 feet thence, N 6.55 degrees E, 13.32 feet thence, N 5.06 degrees W, 17.21 feet thence, N 11.69 degrees W, 19.28 feet thence, N 19.72 degrees W, 24.44 feet thence, N 21.1 degrees W, 13.26 feet thence, N 16.99 degrees W, 8.17 feet thence, N 32.23 degrees W, 11.8 feet thence, N 3.3 degrees W, 11.3 feet thence, N 20.14 degrees E, 13.87 feet thence, N 5.31 degrees E, 9.37 feet thence, N 20.66 degrees E, 14.15 feet thence, N 68.63 degrees E, 16.08 feet thence, N 49.24 degrees E, 16.62 feet thence, N 30.38 degrees E, 14.59 feet thence, N 28.18 degrees E, 6.89 feet thence, N 71.57 degrees E, 11.67 feet thence, N 83.09 degrees E, 7.21 feet thence, S 73.07 degrees E, 10.43 feet thence, S 63.43 degrees E, 4.85 feet thence, S 26.57 degrees E, 8.25 feet thence, S 53.13 degrees E, 7.6 feet thence, S 56.66 degrees E, 9.87 feet thence, S 57.62 degrees E, 10.54 feet thence, S 86.42 degrees E, 10.44 feet thence, S 90 degrees E, 9.77 feet thence, S 15.68 degrees E, 12.85 feet thence, N 84.71 degrees E, 11.77 feet thence, N 73.5 degrees E, 12.22 feet thence, S 86.05 degrees E, 12.62 feet thence, S 4.64 degrees E, 8.06 feet thence, S 22.11 degrees W, 7.5 feet thence, S 25.25 degrees E, 12.72 feet thence, S 38.99 degrees E, 5.86 feet thence, N 87.95 degrees E, 18.24 feet thence, N 88.29 degrees E, 14.55 feet thence, S 70.68 degrees E, 16.93 feet thence, S 29.54 degrees E, 8.98 feet thence, S 6.07 degrees W, 12.31 feet thence, S 19.09 degrees E, 14.33 feet thence, S 33.69 degrees E, 15.02 feet thence, S 49.94 degrees E, 14.97 feet thence, S 50.3 degrees E, 17.94 feet thence, S 58.28 degrees E, 16.84 feet thence, S 75.15 degrees E, 22.36 feet thence, S 81.54 degrees E, 19.48 feet thence, N 24.78 degrees E, 14.91 feet thence, N 12.38 degrees E, 21.86 feet thence, N 20.66 degrees E, 16.98 feet thence, N 27.14 degrees E, 23.41 feet thence, N 59.97 degrees E, 19.25 feet thence, S 76.28 degrees E, 23.05 feet thence, S 34.64 degrees E, 17.41 feet thence, S 2.42 degrees W, 18.51 feet thence, S 14.34 degrees E, 24.19 feet thence, S 15.29 degrees E, 34.56 feet thence, S 15.75 degrees E, 10.55 feet thence, S 31.24 degrees E, 18.58 feet thence, S 25.87 degrees E, 19.1 feet thence, S 8.88 degrees W, 8.43 feet thence, S 26.98 degrees W, 16.07 feet thence, S 34.7 degrees W, 8.24 feet thence, S 12.01 degrees E, 12.51 feet thence, S 69.44 degrees E, 15.58 feet thence, N 87.06 degrees E, 10.17 feet thence, S 20.22 degrees E, 10.55 feet thence, S 34.99 degrees E, 9.54 feet thence, S 35.54 degrees W, 13.44 feet thence, S 37.57 degrees W, 12.81 feet thence, S 23.39 degrees E, 10.5 feet thence, S 35.98 degrees E, 23.49 feet thence, S 85.45 degrees E, 22.99 feet thence, N 26.57 degrees E, 13.98 feet thence, N 36.4 degrees E, 32.03 feet thence, N 86.75 degrees E, 45.91 feet thence, N 89.48 degrees E, 28.91 feet thence, N 85.29 degrees E, 22.21 feet thence, N 82.57 degrees E, 18.12 feet thence, N 67.83 degrees E, 7.59 feet thence, S 51.55 degrees E, 11.31 feet thence, S 65.13 degrees E, 11.15 feet thence, N 87.82 degrees E, 119.77 feet thence, N 83.5 degrees E, 12.58 feet thence, S 75.96 degrees E, 9.66 feet thence, S 58.24 degrees E, 6.43 feet thence, N 90 degrees E, 6.51 feet thence, N 68.2 degrees E, 9.82 feet thence, N 58.74 degrees E, 8.53 feet thence, N 47.66 degrees E, 15.85 feet thence, N 59.93 degrees E, 11.43 feet thence, N 29.74 degrees E, 12.6 feet thence, N 50.96 degrees E, 12.4 feet thence, N 49.4 degrees E, 19.21 feet thence, N 19.33 degrees E, 15.73 feet thence, N 50.53 degrees E, 19.12 feet thence, N 26.57 degrees E, 13.59 feet thence, N 0.92 degrees E, 48.53 feet thence, N 38.52 degrees E, 32.62 feet thence, N 8.47 degrees E, 24.75 feet thence, N 5.23 degrees W, 34.26 feet thence, N 26.57 degrees W, 14.56 feet thence, N 51.45 degrees W, 21.31 feet thence, N 3.37 degrees E, 13.3 feet thence, N 40.6 degrees E, 16.81 feet thence, S 81.87 degrees E, 14.73 feet thence, S 65.56 degrees E, 12.59 feet thence, S 32.54 degrees E, 17.92 feet thence, S 70.2 degrees E, 20.76 feet thence, S 87.42 degrees E, 34.67 feet thence, N 77.03 degrees E, 44.09 feet thence, N 65.79 degrees E, 42.54 feet thence, N 56.31 degrees E, 33.8 feet thence, N 84.53 degrees E, 19.8 feet thence, N 89.69 degrees E, 47.4 feet thence, N 12.98 degrees E, 61.47 feet thence, N 30.2 degrees E, 56.95 feet thence, N 17.33 degrees E, 38.47 feet thence, N 9.11 degrees E, 27.96 feet thence, N 9.53 degrees W, 25.98 feet thence, N 4.49 degrees E, 197.01 feet thence, N 80.61 degrees E, 404.04 feet thence, S 66.36 degrees E, 395.31 feet thence, S 89.3 degrees E, 653.34 feet thence, N 1.1 degrees E, 2613.84 feet thence, S 89.81 degrees E, 934.98 feet thence, N 1.1 degrees E, 985.36 feet thence, N 89.81 degrees W, 58.11 feet to the Point of Ending at a point N 89.8127 W 917.391 feet and N 1.102 E 941.29 feet from the southwest corner of Section 11, Town 07 North, Range 11 West. Total Length of branch: 8,734.38 feet

Total length of drain and all branches: 20,110.62 feet

Lamberton Creek Drain - Preliminary

APPORTIONMENT % TOTAL COSTS

	APPORTIONMENT %	TOTAL COSTS
SPECIAL DISTRICT TOTALS	68.63%	\$1,216,758.27
MDOT ROAD TOTALS	3.99%	\$70,812.26
CITY ROAD TOTALS	5.11%	\$40,157.92
COUNTY ROAD TOTALS	2.27%	\$90,626.33
GRAND RAPIDS TOWNSHIP AT LARGE	7.77%	\$137,803.56
CITY OF GRAND RAPIDS AT LARGE	11.71%	\$207,692.07
PLAINFIELD TOWNSHIP AT LARGE	0.51%	\$9,093.12
TOTAL	100.00%	\$1,772,943.52

AVERAGE RESIDENTIAL COST = \$ 51.41
 COST PER ACRE = \$ 389.16



KENT COUNTY DRAIN COMMISSIONER

COMPUTATION OF COST

LAMERTON CREEK DRAIN

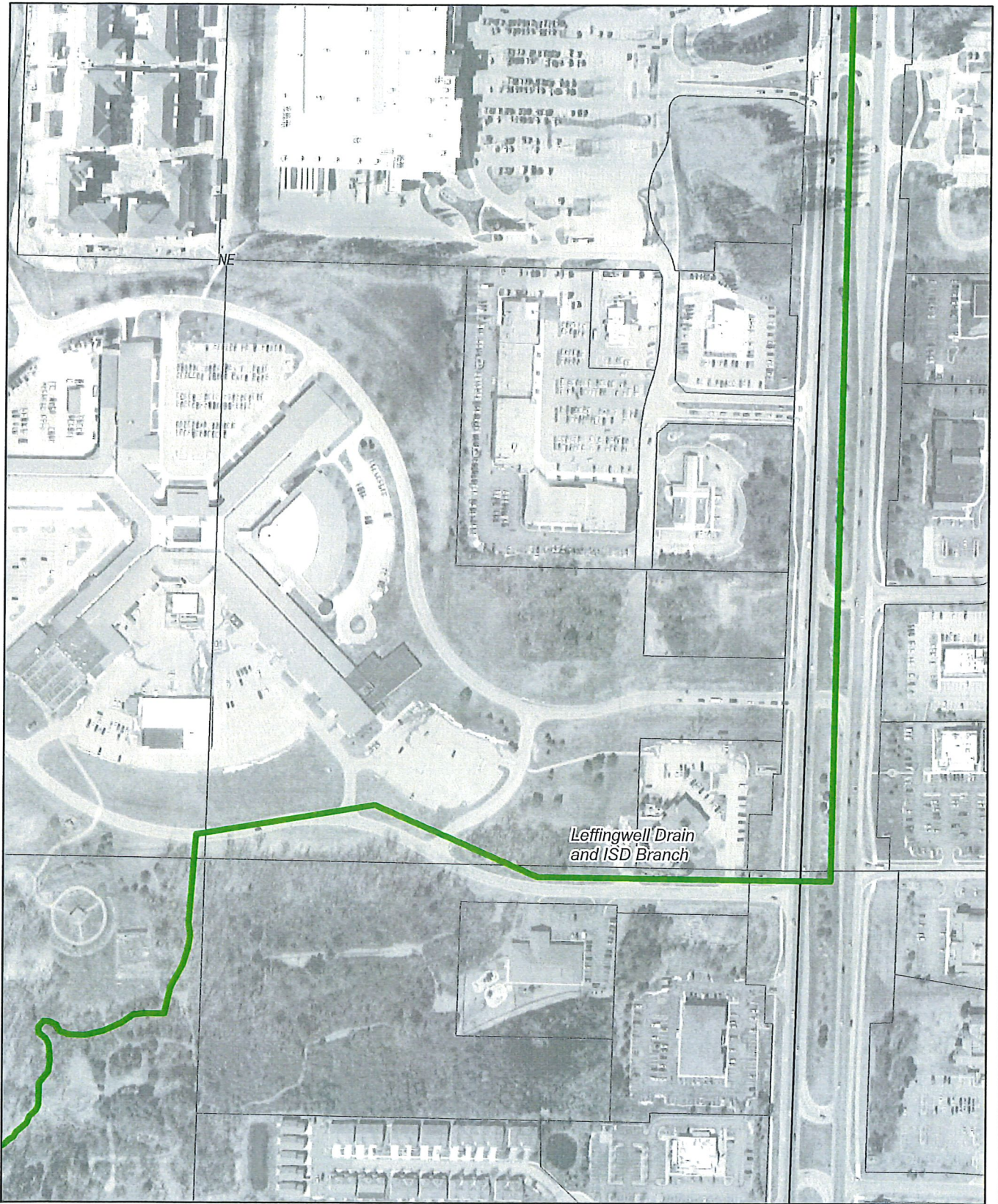
PRELIMINARY - NOT OFFICIAL

In the Matter of the ___ Drain, traversing the Township of ___, County and State aforesaid. Be it Known, That I, Kenneth Yonker, County Drain Commissioner of the County of Kent and State of Michigan, in accordance with the statute in such case made and provided, did on the ___th day of ___, 2020 make the following computation of the entire cost of said Drain to-wit:

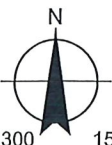
1	Cost of Surveying and Laying out Drainage District		\$500.00
2	Compensation to be Paid Board of Determination		\$1,500.00
3	Compensation to be Paid Board of Review		\$0.00
4	Compensation to be Paid Special Commissioners		\$0.00
5	Contracts for Construction Bridges		\$0.00
6	Contracts for Construction Maintenance	\$494,400.00	
	Engineering Expense	\$98,880.00	
	Contracted Engineering Expense	\$0.00	
	Inspection Expense	\$0.00	\$593,280.00
7	Cost of Appeal		\$0.00
8	Publishing & Printing Notices (estimate)		\$2,000.00
9	Probate Fees		\$0.00
10	Attorney Fees		\$0.00
11	Interest on Drain Notes (Note total \$ @ %)		\$0.00
12	Easement Acquisition for 250 Parcels		\$821,075.00
	Title Search	\$62,500.00	
	Preparation of Exhibit-Engineering	\$100,000.00	
	Preparation of Easement document - Legal	\$62,500.00	
	Negotiation/coordination	\$250,000.00	
	Appraisals	\$87,500.00	
	Purchase of Easements	\$125,000.00	
	Legal Proceedings	\$125,000.00	
	Recording	\$7,500.00	
	County Transfer Tax Fees	\$137.50	
	State Transfer Tax fees	\$937.50	
13	Future Maintenance - 1 mile @ \$2500/mi.		\$0.00
	Gross Sum of Expenses		\$1,418,355.00
	Contingent Expenses (25%)		\$354,588.75
	Less Cash on Hand		\$0.00
	Total Cost of Project of Lamberton Creek Drain		\$1,772,943.75

Filed in my office with other papers pertaining to the within mentioned drain
Dated at Grand Rapids, Michigan this ___th day of ___, 2020.

Kenneth Yonker
County Drain Commissioner of Kent County



*Leffingwell Drain
and ISD Branch*



Page Scale set for printing
to 8.5x11



— Leffingwell Drain and ISD Branch

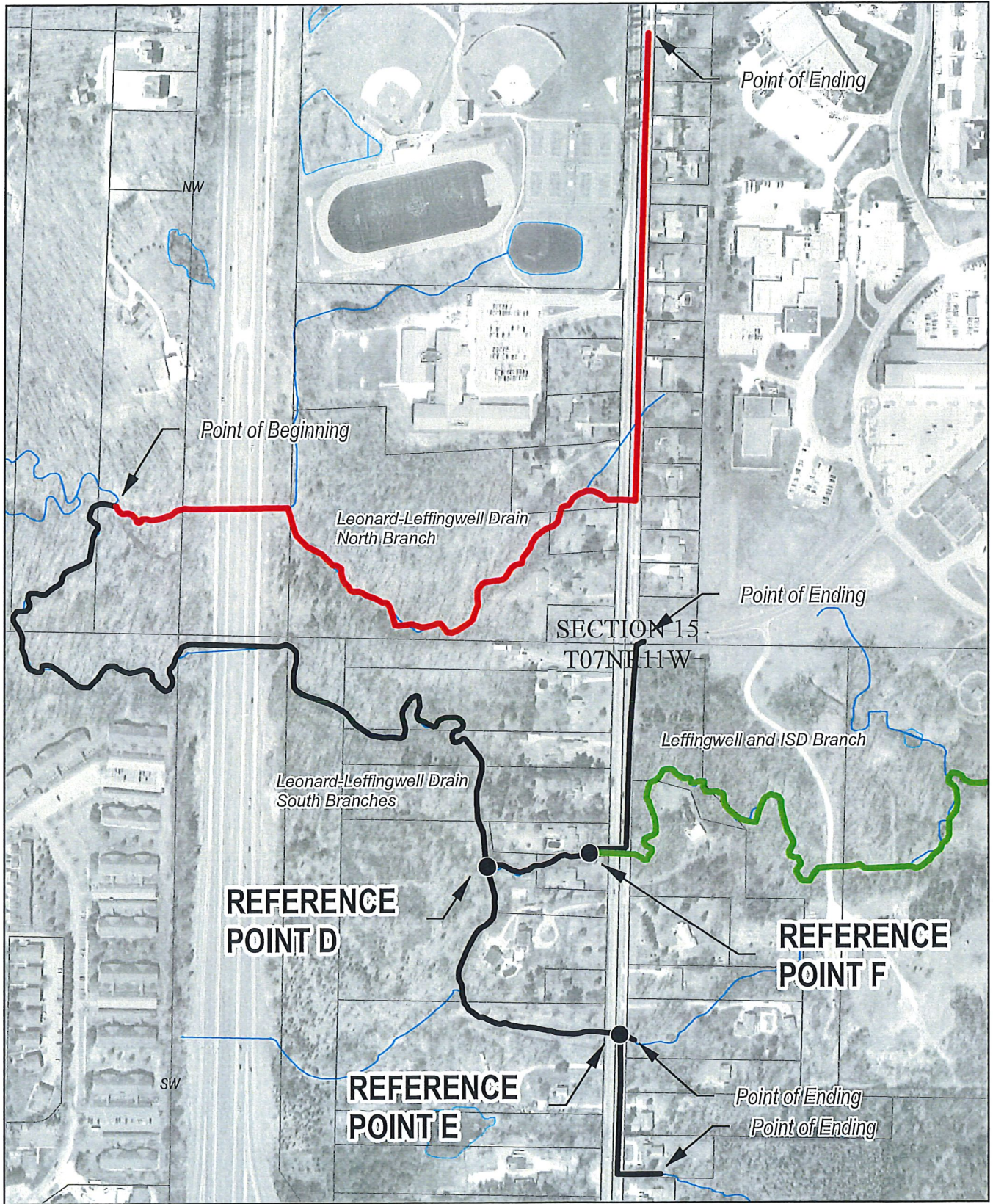


KNAPPS CORNER DRAIN

Exhibit A

Page 3

City of Grand Rapids
Grand Rapids Township
Kent County, MI



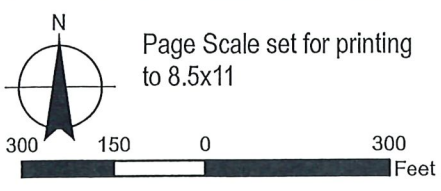
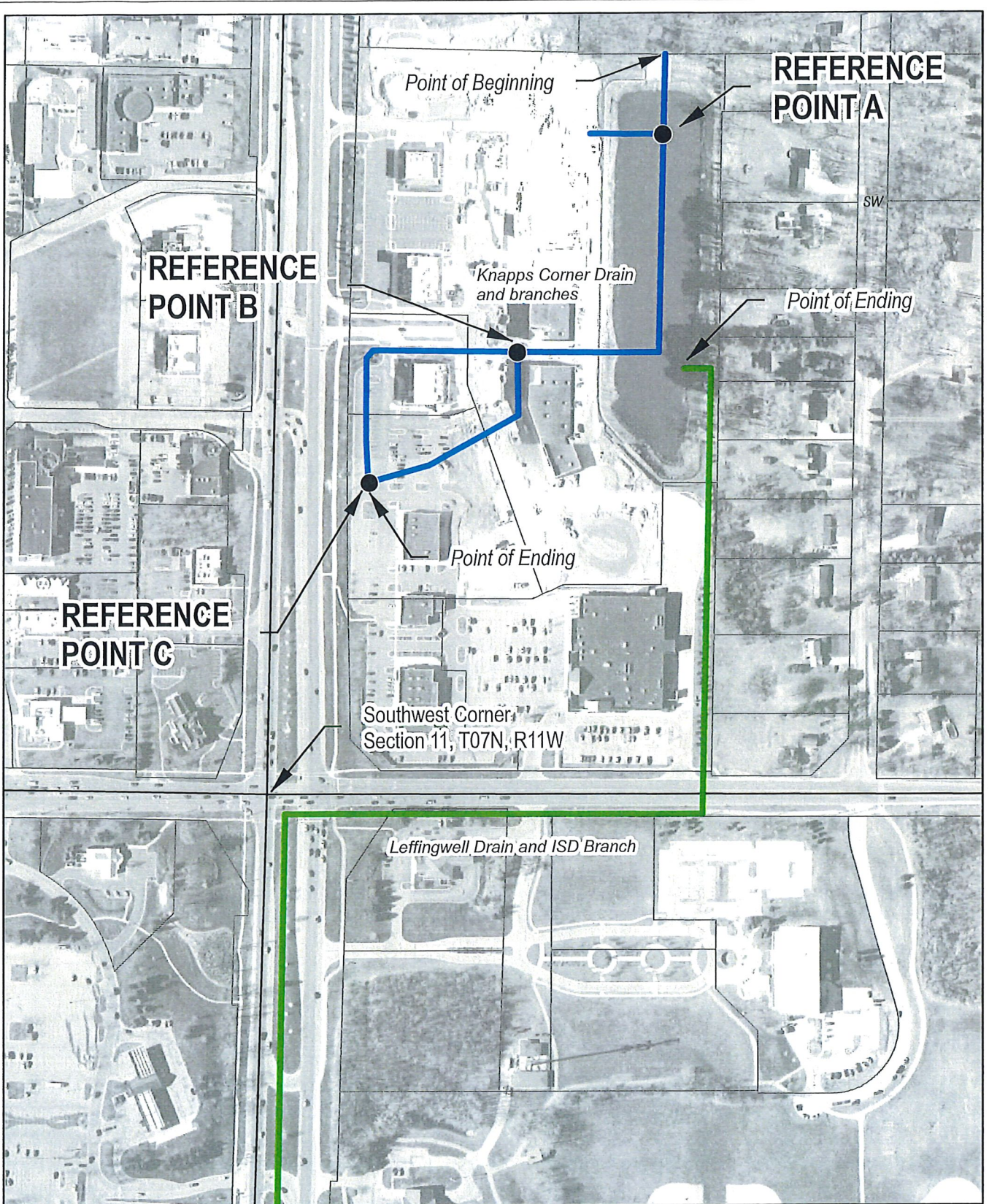
Page Scale set for printing
to 8.5x11

- Leonard-Leffingwell Drain, North Branch
- Leonard-Leffingwell Drain, South Branches
- Leffingwell Drain and ISD Branch



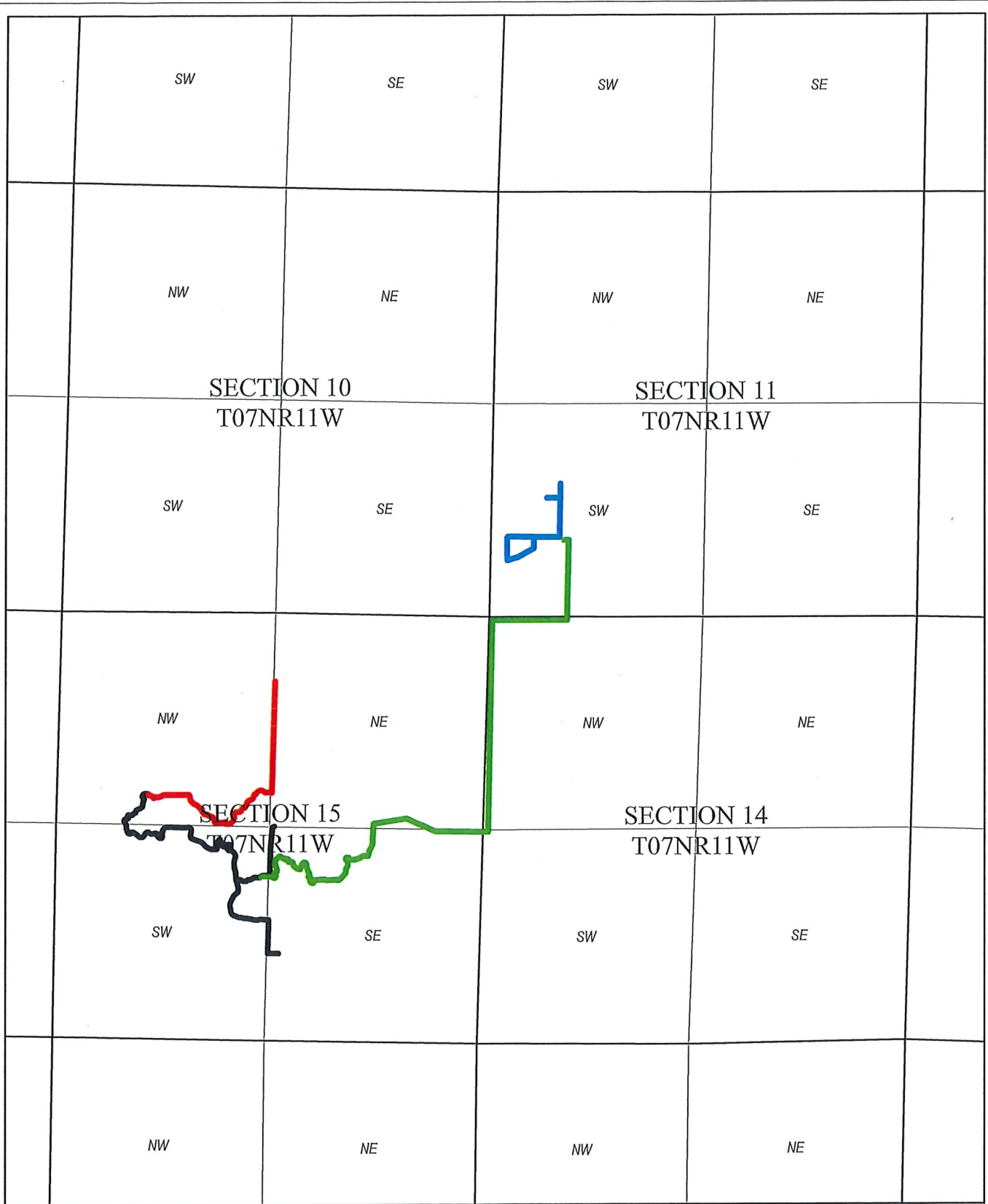
KNAPPS CORNER DRAIN
Exhibit A
Page 4

City of Grand Rapids
Grand Rapids Township
Kent County, MI



- Knapps Corner Drain and Branches
- Leffingwell Drain and ISD Branch





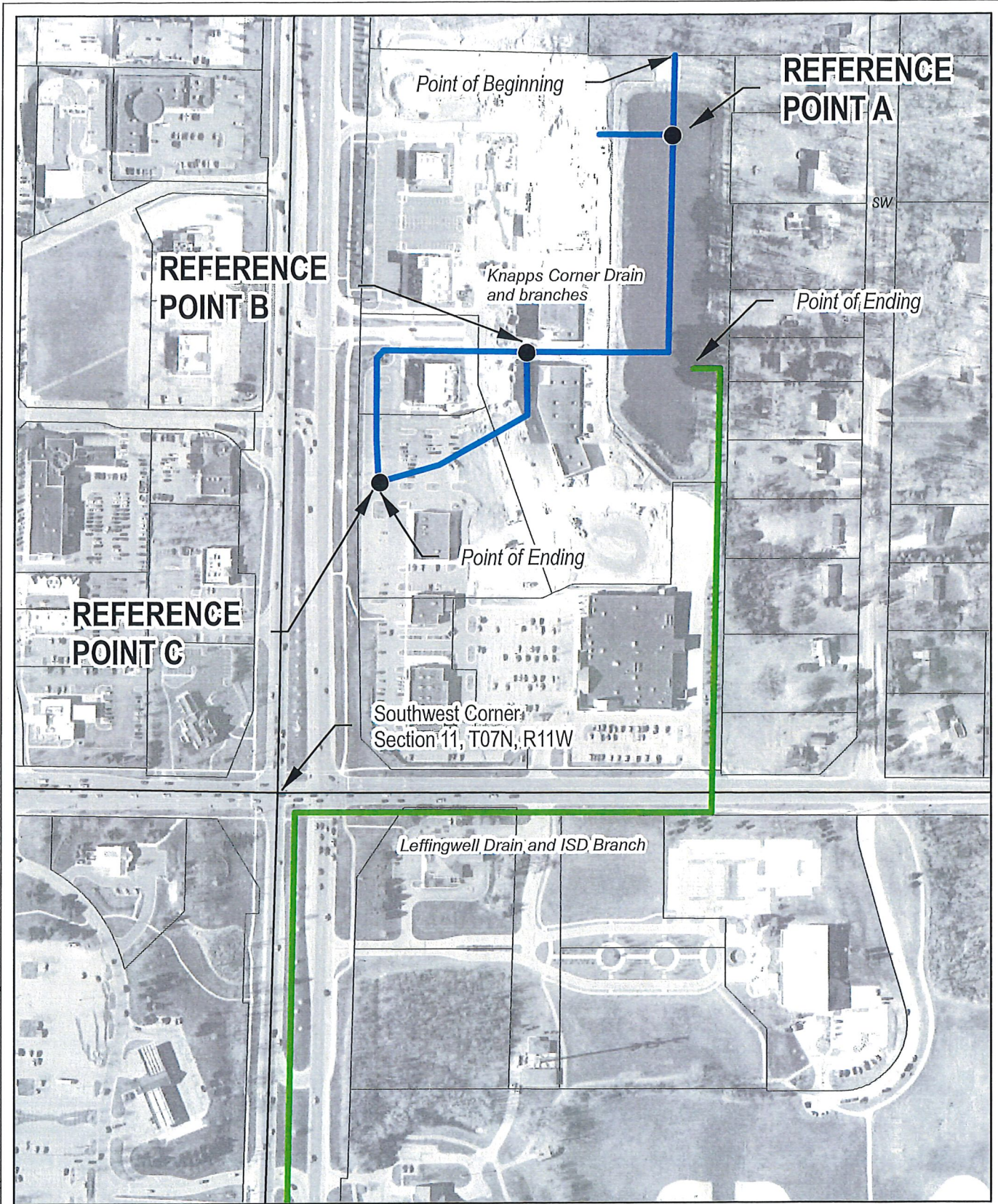
Page Scale set for printing
to 8.5x11

- Leonard-Leffingwell Drain, North Branch
- Leonard-Leffingwell Drain, South Branches
- Knapps Corner Drain and Branches
- Leffingwell Drain and ISD Branch

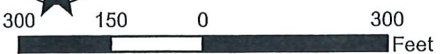


KNAPPS CORNER DRAIN
Exhibit A
Page 1

City of Grand Rapids
Grand Rapids Township
Kent County, MI



Page Scale set for printing to 8.5x11

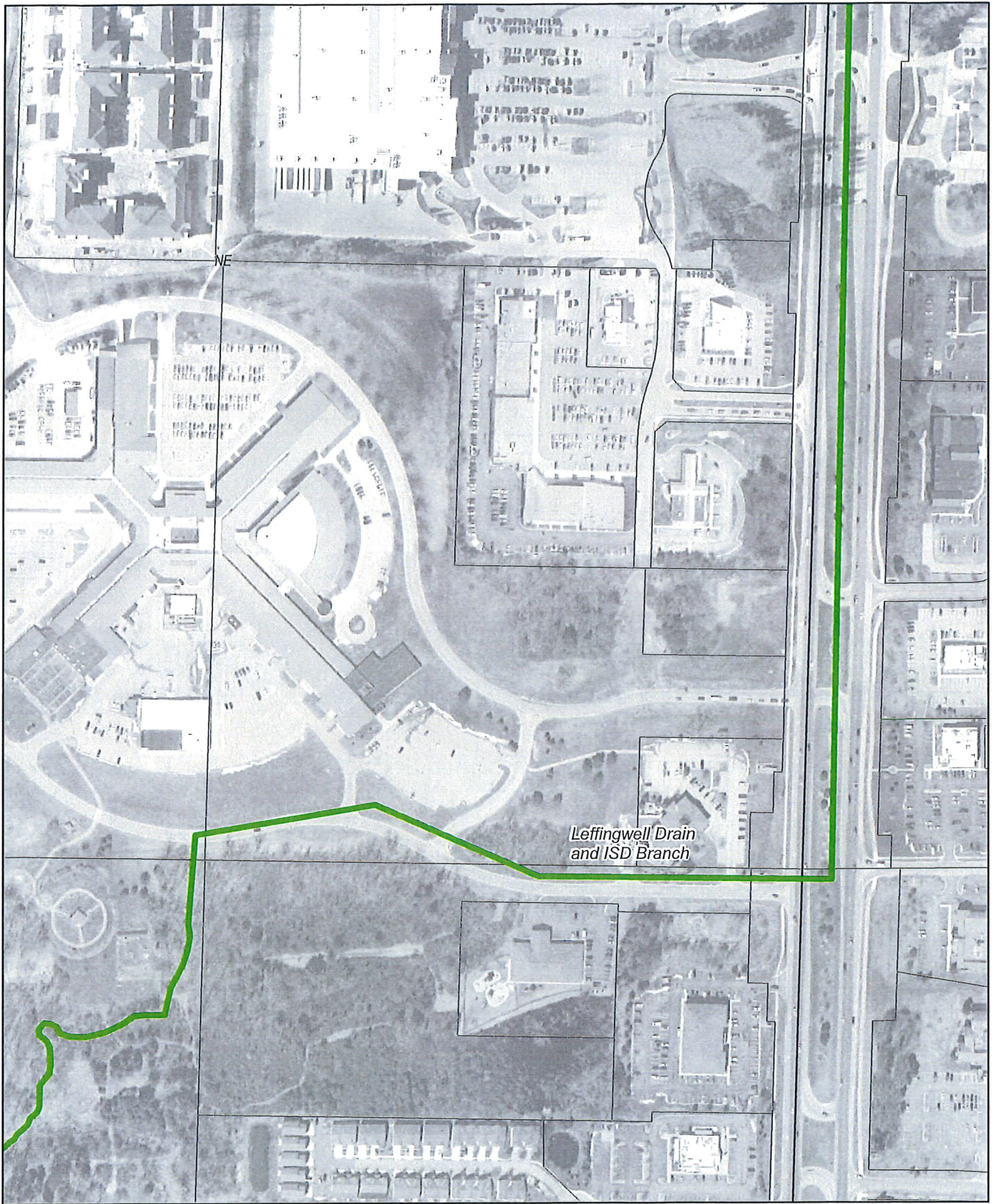


- Knapps Corner Drain and Branches
- Leffingwell Drain and ISD Branch



KNAPPS CORNER DRAIN
Exhibit A
Page 2

City of Grand Rapids
 Grand Rapids Township
 Kent County, MI



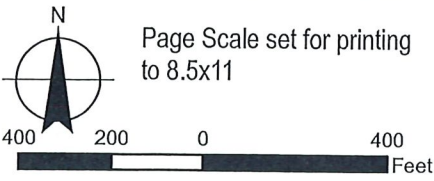
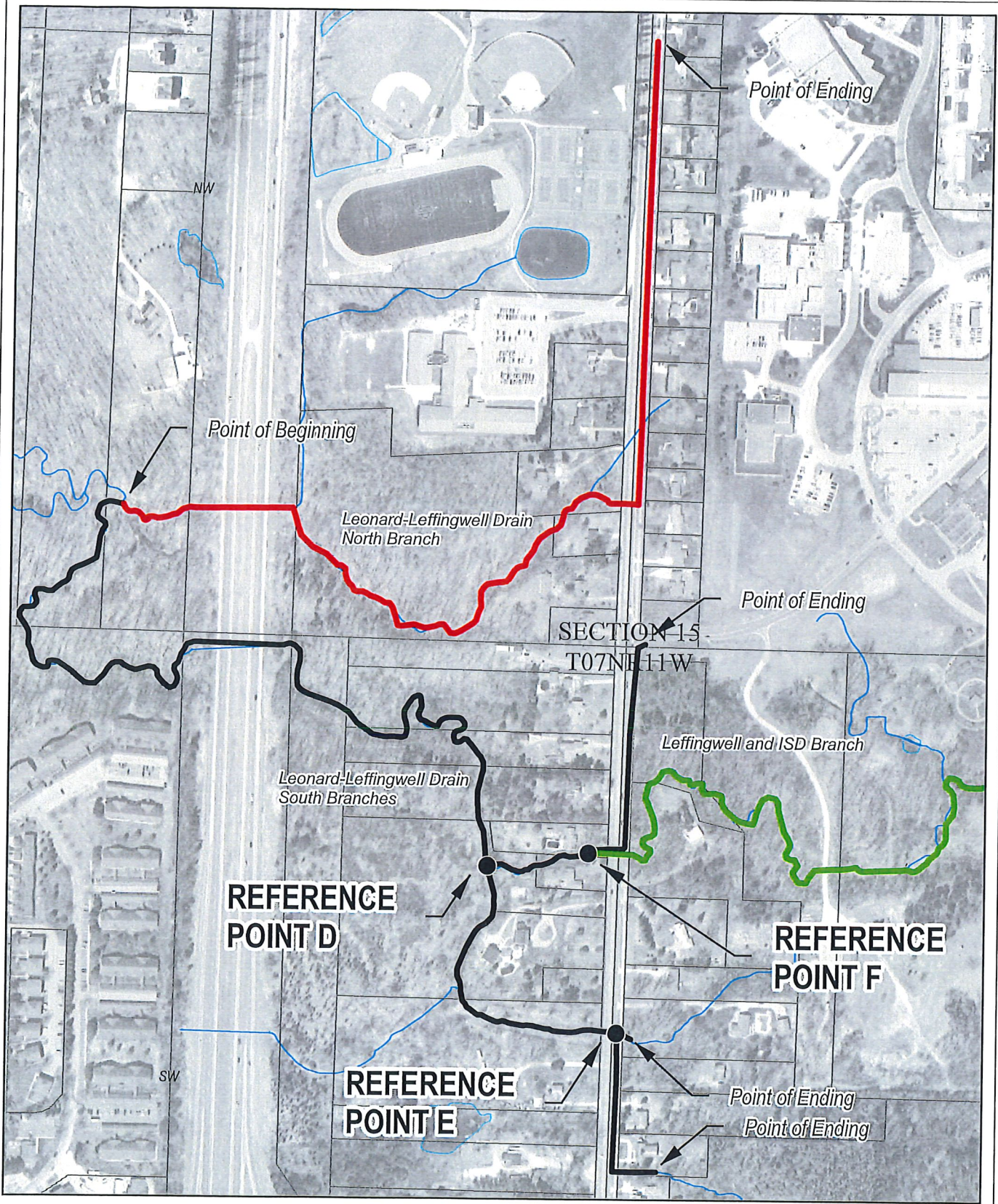
Page Scale set for printing to 8.5x11

Leffingwell Drain and ISD Branch



KNAPPS CORNER DRAIN
Exhibit A
Page 3

City of Grand Rapids
Grand Rapids Township
Kent County, MI



Page Scale set for printing to 8.5x11

- Leonard-Leffingwell Drain, North Branch
- Leonard-Leffingwell Drain, South Branches
- Leffingwell Drain and ISD Branch



KNAPPS CORNER DRAIN
Exhibit A
Page 4
 City of Grand Rapids
 Grand Rapids Township
 Kent County, MI