

# Kent County Purchase of Development Rights Program

21 Preserved Farms      2,282.5 acres  
As of February 25, 2013



Photo: Bradford Dairy Preserved Farm, Sparta Township 2007

# Howard Farm

## 106 Acres

### Vergennes Township

- Preserved in 2005
- First farm preserved by the Kent County PDR Program.
- Field crops. Soy beans produced on the farm are low trans fat beans use to make cooking oil by Zeeland Farm Services.
- Supported by: Lowell Area Community Fund, Grand Rapids Community Foundation, Steelcase Foundation, and the USDA Farm and Ranchland Protection Program.
- \*Development Rights Cost: \$4,172 per acre (before the market crash of 2008)



Photo of the Howard family taken by Kendra Wills of MSU Extension at the closing ceremony in 2005.

\*Note: All Development Rights Costs were determined by an independent, state certified appraiser hired by Kent County. This is true for all 21 farms preserved by the Kent County PDR Program.

# Flanagan Farm

## 145 Acres

### Grattan Township

- Preserved in 2006
- Field Crops
- Second generation operates farm
- Crops are processed by:
  - Zeeland Farm Services
  - Woodbury Ethanol plant
  - Herbruck's
  - Used as feed by an Ionia County dairy farm.
- Supported by: Grand Rapids Community Foundation, Urban Cooperation Board, Wege Foundation, and the USDA Farm and Ranchland Protection Program.
- Development Rights Cost: \$4,000 per acre



Photo of the Flanagan farm  
by Kendra Wills of MSU  
Extension in 2005.

# Mary L. Heffron Farm

75 Acres

## Grattan Township

- Preserved in 2007
- Field Crop Production
- Tim Heffron of H & W Farm Market in Grattan Township operates this farm for his mother.
- H & W Market features the family's cherry juice as well as many other Michigan grown products.
- Crops from the preserved farm are used for:
  - Feed for Herburck's egg production
  - Processed for cooking oil and livestock feed by Zeeland Farm Services
  - Processed for Ethanol production by the Woodbury ethanol plant and DDGs are then used for livestock feed.
- Supported by: Grattan Township, Steelcase Foundation, Wege Foundation, Urban Cooperation Board, USDA Farm and Ranch Land Protection Program.
- Development rights cost: \$4,326 per acre



Photo of the Heffron farm by Dennis Pennington of MSU Extension in 2006.

## Bradford Dairy Farm

80 Acres

### Sparta Township

- Preserved in 2007
- This farm supports a 1,000+ head dairy farm in Sparta Township.
- Bradford Dairy Farm is a fourth generation family operated dairy farm. Most of the milk is transported to Country Fresh in Wyoming, MI for processing.
- This was the first farm preserved with grant funding from the State of Michigan farmland preservation PDR grant program.
- Landowners contributed \$40,000 toward the preservation of this farm.
- Other Support from: Michigan Agricultural Preservation Fund, Grand Rapids Community Foundation, Steelcase Foundation, Urban Cooperation Board.
- Development Rights Cost: \$3,300 per acre



Photo of the Bradford farm  
by Kendra Wills of MSU  
Extension in 2007.

# Seif Farm

## 141 Acres

### Grattan Township

- Preserved in 2007
- Now owned and operated by Joe Seif, who lives on the farm. This is a second generation farm.
- Beef and field crops.
- Crops are used as feed for livestock, feed for Herbruck's egg production and processed by Zeeland Farm Services.
- Supported by: Crystal Flash, Grattan Township, Grand Rapids Community Foundation, Steelcase Foundation, Wege Foundation, Urban Cooperation Board, and private funds contributed through a fund raiser dinner event.
- Development Rights Cost: \$3,404 per acre



Photo of the Seif farm by Jay Hoekstra of Grand Valley Metro Council in 2007.

## Lance Robinson Farm

154 Acres

### Sparta Township

- Preserved in 2007.
- Second generation of family dairy and field crop farm.
- Milk approximately 300 head daily.
- Milk is transported to many Michigan processors including Lapreno cheese in Allendale and Yoplait in Reed City.
- Landowners contributed over \$79,000 toward the preservation of this farm.
- Other Support From: Grand Rapids Community Foundation, Michigan Agricultural Preservation Fund, Steelcase Foundation, and the USDA Farm and Ranchlands Protection Program.
- Cost of development rights: \$3,363 per acre



Photo of the Robinson farm by Kendra Wills of MSU Extension in 2007.

**Joe and Susan Merriman  
Farm  
57 Acres  
Lowell Township**

- Preserved in 2008
- Field crops and Angus beef farm
- The property owners contributed over \$51,000 toward the preservation of their farm.
- Supported By: Institute for Systemic Change at the Grand Rapids Community Foundation, Lowell Area Community Fund, Steelcase Foundation, Dyer-Ives Foundation, Urban Cooperation Board, and the USDA Farm and Ranchland Protection program.
- Cost of Development Rights: \$4,982 per acre



Photo of the Merriman farm  
by Kendra Wills of MSU  
Extension in 2009.



# Steve and Cindy Koning

## 170 Acres

### Vergennes Township

- Preserved in 2010
- Field crops and horse farm (former dairy farm)
- Mr. and Mrs. Koning are 4-H Club leaders.
- Supported by: Vergennes Township, Dyer-Ives Foundation, M.E. Davenport Foundation, Kent County Agricultural Preservation Endowment Fund, Lowell Area Community Fund, Steelcase Foundation, Urban Cooperation Board, Wege Foundation and the USDA Farm and Ranchlands Protection Program.
- Cost of development rights: \$2,176 per acre



Photo of the Koning family taken by Kendra Wills of MSU Extension in 2011.

## Gay and Vern Nauta 74.5 Acres Vergennes Township

- Preserved in 2010
- Field crops
- The landowners contributed \$10,800 toward the preservation of this farm.
- Also supported by: Dyer-Ives Foundation, Grand Rapids Community Foundation, Lowell Area Community Fund, Wege Foundation, USDA Farm and Ranchland Protection Program.
- Cost of development rights: \$1,800 per acre



Photo of the Nauta Farm  
taken by Kendra Wills of  
MSU Extension in 2010.

## Ron and Jackie Rittersdorf

228 Acres

### Vergennes Township

- Preserved in 2010
- Field crops
- Directly abuts Nauta farm and across the street from Flanagan farm. The Seif, Mary Heffron and Wilcox farms are within walking distance. This group of preserved farms is known as the Parnell Avenue Corridor.
- The Parnell Avenue Corridor is the largest block of preserved farmland in Michigan outside of Peninsula Township in Grand Traverse County.
- Supported by: Kent County, Dyer-Ives Foundation, Grand Rapids Community Foundation, Lowell Area Community Fund, and the USDA Farm and Ranchlands Protection Program.
- Cost of Development Rights: \$1,400 per acre



Photo of the Rittersdorf farm taken by Kendra Wills of MSU Extension in 2010.

# **Bettes and Kingsbury Farm**

## **138 Acres**

### **Sparta Township**

- Preserved in 2010
- Apple, Horse and Field Crop farm
- Operated by two step brothers that are the second generation to own the farm.
- Apples are packed by Jack Brown Produce in Sparta, MI.
- Landowners contributed \$29,000 towards the preservation of their farm.
- Supported by: Kent County, Sparta Township, Kent County Farm Bureau, Dyer-Ives Foundation, Grand Rapids Community Foundation, Frey Foundation, Steelcase Foundation, USDA Farm and Ranch Land Protection Program.
- Cost for development rights: \$2,000 per acre



Photo of Bettes and Kingsbury Farm by Aquinas College Photographer in 2011.

## Max and Cindy Cole 116 Acres Courtland Township

- Preserved in 2010
- Field Crops
- Property owners contributed \$39,150 toward the preservation of their farm.
- Also Supported by: Kent County, Dyer-Ives Foundation, Grand Rapids Community Foundation, Steelcase Foundation, and the USDA Farm and Ranchlands Protection Program.
- Cost of Development Rights: \$1,405 per acre



L to R: Lucille Kingsbury, Gerry Kingsbury, Barbara Bettes, Paul Bettes, Max Cole and Cindy Cole. Taken by Kendra Wills of MSU Extension in 2011.

# Marcia Wilcox

## 60 Acres

### Vergennes Township

- Preserved in 2011
- Field crops.
- Currently produces alfalfa for feed for an Ionia County family dairy operation.
- Property owners contributed \$10,800 toward the preservation of this farm.
- Additional support from: Dyer-Ives Foundation, Grand Rapids Community Foundation, Lowell Area Community Fund, Wege Foundation and the USDA Farm and Ranchlands Protection Program.
- Development Rights Cost: \$2,100 per acre



Photo of the Wilcox family taken by Kendra Wills of MSU Extension in 2011.

# Bradford LLC Farm

## 61 Acres

### Sparta Township

- Preserved in 2011
- Field Crops
- Crops are used for the 1200+ acre dairy farm that milks over 1000 head daily.
- Third generation operates the farm today.
- Jason Bradford has a passion for energy efficiency is an early adopter of many energy efficient technologies.
- Supported by: Kent County, Grand Rapids Community Foundation and Frey Foundation, and the USDA Farm and Ranchlands Protection Program.
- Cost of Development Rights: \$1,606 per acre



Photo of Bradford LLC Farm by Kendra Wills of MSU Extension in 2011.

**Don and Shirlee  
Wollander  
76.5 Acres  
Nelson Township**

- Preserved in 2011.
- Corn, soybeans, hay and oats for processing as livestock feed by many area businesses.
- Supported by: Kent County, Nelson Township, Grand Rapids Community Foundation and the Frey Foundation.
- Property owners have a parcel across the street that is one of only two properties in Kent County in the DNR's Hunters Access Program. This property also produces buckwheat, a rare crop in Kent County.
- Cost of development rights: \$1,200 per acre



Photo of the Wollander farm taken by Jerry Davis of the Kent County Agricultural Preservation Board in 2011.



# **Wilson and Rose Kruithoff Farm**

## **225 Acres**

### **Tyrone Township**

- Preserved in 2012
- Hogs, Beef and Field Crops
- Two generations of family members operate the family farm.
- PDR supported by a \$60,000 contribution from the property owner.
- Also supported by: Kent County, Grand Rapids Community Foundation, Frey Foundation, and the USDA Farm and Ranch Lands Protection Program.
- Within walking distance of the Bull farm preserved through the State of Michigan PDR Program in 1999.



Photo by Suzie Reinbold,  
Kent County Agricultural  
Preservation Board Member  
in 2012.

**James A. Bradford Family  
Trust Farm  
74 Acres  
Sparta Township**

- Preserved in 2011
- Field Crops
- Crops are used for the 1200+ acre dairy farm that milks over 1000 head daily.
- Most of the milk from Bradford Dairy is delivered to Country Fresh in Wyoming, MI.
- Farm operates under a Comprehensive Nutrient Management Plan.
- Supported by: Kent County, Grand Rapids Community Foundation, Frey Foundation, and the USDA Farm and Ranchlands Protection Program.
- Cost of development rights: \$1,600 per acre



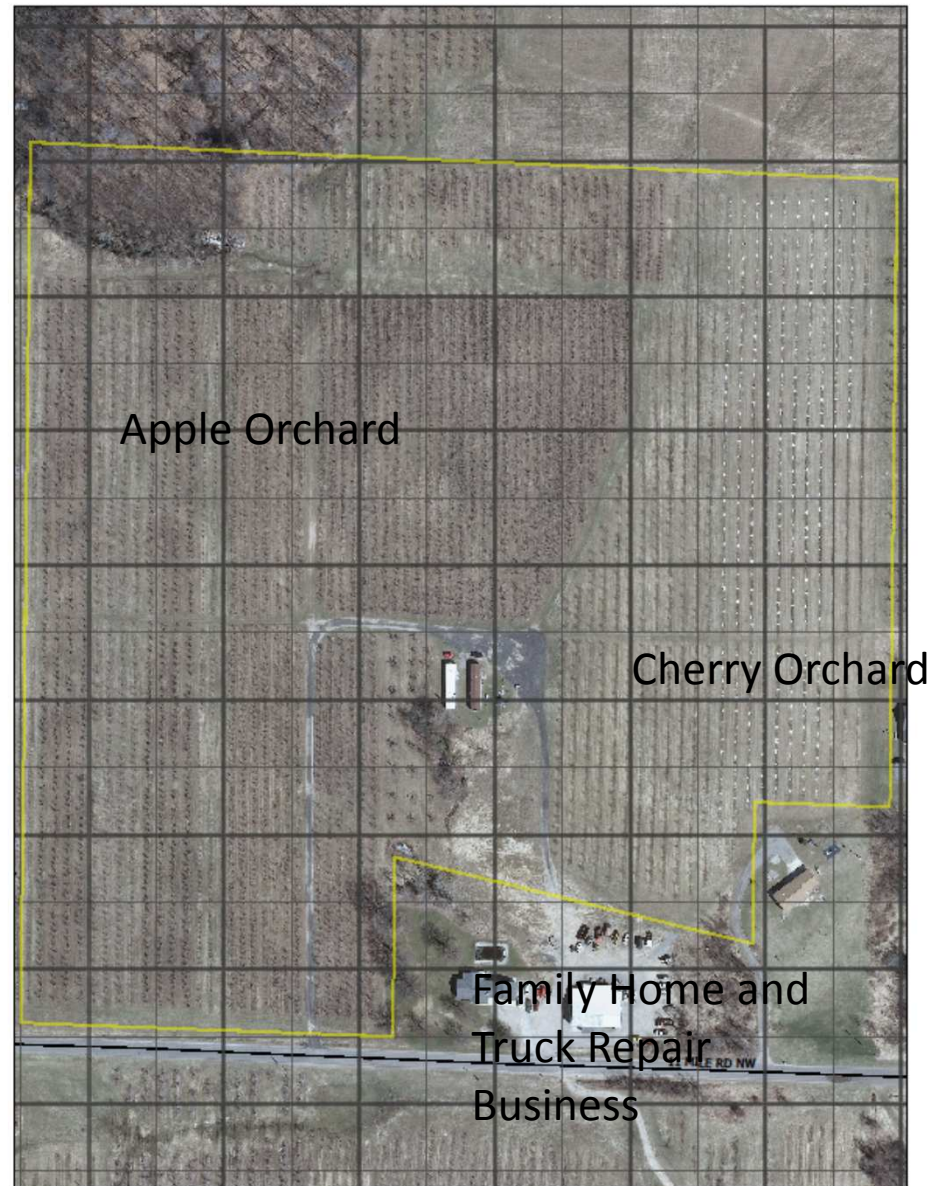
Photo of the Bradford Trust farm taken by Kendra Wills of MSU Extension in 2011.

# G & L Orchards

## 35 Acres

### Sparta Township

- Preserved in 2012. Yellow line indicates area preserved.
- Farm is operated by George Goodfellow and his son Josh.
- Apples are packed by Jack Brown Produce in Sparta, MI. Many apples are sold in Kroger grocery stores.
- First farm to be preserved by 100% private funding sources. \$23,500 was raised through a fund raiser event to preserve this family farm.
- Also Supported By: Kent County, Grand Rapids Community Foundation and the Frey Foundation.
- Development rights cost: \$1,600 per acre



## **Bradford Family LLC**

**115 Acres**

### **Sparta Township**

- Preserved in 2012.
- Field crop farm to support 1,000+ head family dairy farm.
- Bradford Dairy is the largest taxpayer in Sparta Township.
- They employ 24 people year-round.
- The property owners contributed \$74,000 towards the preservation of this farm.
- Also supported by: Kent County, Grand Rapids Community Foundation, Frey Foundation and the USDA Farm and Ranchlands Protection Program.
- Cost of development rights: \$2,557 per acre



Photo of the Bradford Family LLC farm taken by Kendra Wills of MSU Extension in 2012.

## **Clayton and Anne Lovins**

### **Farm**

**75 Acres**

### **Grattan Township**

- Preserved in 2013
- Field crops
- Soybeans from this farm are processed by Zeeland Farm Services. A large product of ZFS is feed for West Michigan Turkey Producers farms.
- Supported by: Grattan Township, Kent County, Grand Rapids Community Foundation, and the USDA Farm and Ranchlands Protection Program.
- Cost of development rights: \$1,440 per acre



Photo of the Lovins farm  
taken by Kendra Wills of MSU  
Extension in 2012.

**Betty J. Patterson, Shirley  
DeYoung, & Sandy  
Frandsen  
75 Acres  
Courtland Township**

- Preserved in 2013
- Field crops farm
- Supported by: Kent County, Grand Rapids Community Foundation, Frey Foundation, and the USDA Farm and Ranchlands Protection Program
- Close to the Keech farm which was preserved by the State of Michigan's farmland preservation program in 1999.
- Cost of Development Rights: \$1,120 per acre



Photo of the Patterson farm  
taken by Kendra Wills of  
MSU Extension in 2012.

# Supporting the Kent County PDR Program

In 2008, Kent County partnered with the M.E. Davenport Foundation and the Grand Rapids Community Foundation (GRCF) to create the Kent County Agricultural Preservation Fund at GRCF. 100% of the funds deposited in this account are used to support the Kent County PDR farmland preservation program.

If you would like to make a financial contribution to support farmland preservation in Kent County, please **make your check payable to Grand Rapids Community Foundation**.

In the memo line write: “Kent County Ag Preservation Fund” and mail your check to:



**Grand Rapids**  
community foundation<sup>SM</sup>  
For **good.** For **ever.**<sup>®</sup>

Ms. Jonse Young  
Grand Rapids Community Foundation  
185 Oaks Street NW  
Grand Rapids, MI 49503  
Tel: 616-454-1751

You will be mailed a receipt for your files. Thank you so much for your support. Every \$1 makes a difference.