



OFFICE OF THE DRAIN COMMISSIONER

Kenneth J Yonker, Drain Commissioner

LAKE SHORE ESTATES DRAIN

SAMPLE

| <u>Parcel Number</u> | <u>Year(s) of Assessment</u> |
|-----------------------------------|------------------------------------|
| | 1 |
| <u>Estimated Apportionment %</u> | <u>Estimated Annual Assessment</u> |
| 9.73% | |
| <u>Estimated Total Assessment</u> | |
| \$386.12 | |

THIS IS NOT A BILL.

**Drain assessments will appear on winter tax statement*

Dear Property Owner,

You have received this notice because you own property within the Drainage District of the Lake Shore Estates Drain. The Lake Shore Estates Drain is a storm sewer system that consists of catch basins, storm sewer, detention basins and controlled outlet structure that manages the storm water runoff.

As Drain Commissioner, I am responsible to maintain this stormwater system for the public health, welfare, and convenience of the drainage district. Maintenance was completed in 2023 that removed woody debris and obstructions from the detention basins including trees and limbs.

The Day of Review of Apportionment and Day of Review of Boundary is an opportunity for property owners within the district to review their apportionment of costs of the maintenance. Costs for maintenance are not provided by other means such as regular property taxes; we must assess the costs for maintenance to the property owners and governmental units within the District. At this time, please review your apportionment percentage and estimated assessment. The Special Assessment will be placed on your Winter Tax Bill in 2024.

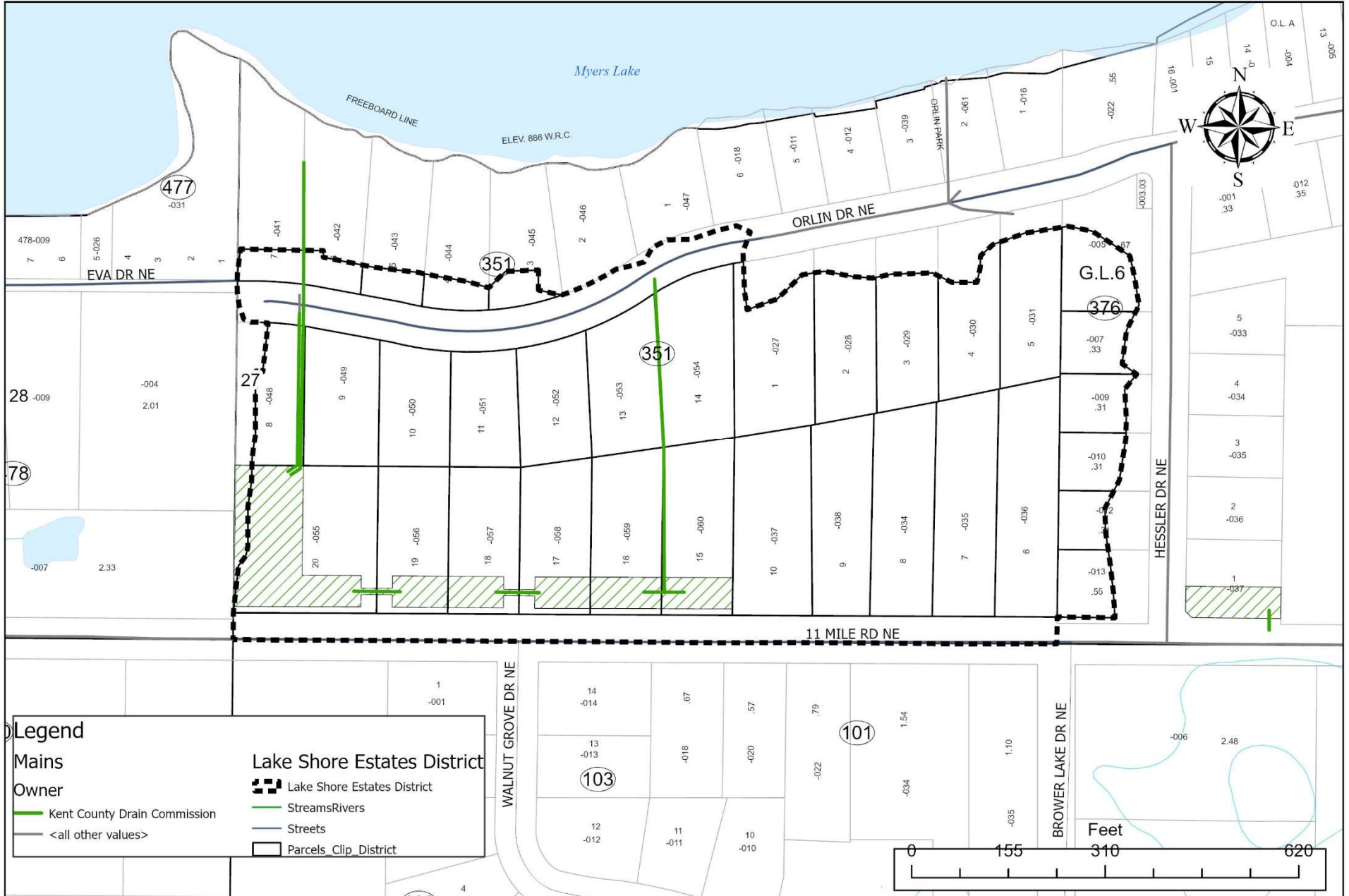
Dated: May 13, 2024

A handwritten signature in blue ink that reads "Kenneth J. Yonker".

Kenneth J. Yonker
Kent County Drain Commissioner

LAKE SHORE ESTATES DRAIN DRAINAGE DISTRICT

Section 27, T.9N., R.10W., Courtland Township, Kent County, MI



KENNETH YONKER,
KENT COUNTY DRAIN COMMISSIONER

AEL - 4.24.2024



Kent County, MI makes no warranty, expressed or implied, regarding the accuracy, completeness or usefulness of information presented. Users of this information assume all liability for its fitness for a particular use.

**NOTICE OF DAY OF REVIEW OF DRAINAGE DISTRICT BOUNDARIES
AND REVIEW OF APPORTIONMENTS**

DATE: Thursday, May 30, 2024
TIME: 8:30 a.m. – 4:30 p.m.
LOCATION: Office of the Kent County Drain Commissioner
775 Ball Ave NE, Grand Rapids, MI 49503
QUESTIONS: (616) 632-7910

The Day of Review is an opportunity to review the **Lake Shore Estates Drain Drainage District** boundaries and apportionment of benefit with the Drain Commissioner or a staff member. A map depicting the proposed Drainage District boundary revisions can be found on the reverse side of this notice and on the Drain Commissioner’s website at: https://www.accesskent.com/Departments/DrainCommissioner/meeting_notices.htm.

YOU ARE NOT REQUIRED TO ATTEND THE DAY OF REVIEW. Prior to the Day of Review, you may contact the Drain Commissioner’s Office at (616) 632-7910 or visit its website at https://www.accesskent.com/Departments/DrainCommissioner/meeting_notices.htm to get information about your apportionment and assessment.

Prior to the Day of Review:

- **Website.** Please visit the Drain Commissioner’s website at https://www.accesskent.com/Departments/DrainCommissioner/meeting_notices.htm for more information regarding the Day of Review, including a map of the proposed Drainage District boundary revisions and proposed apportionment roll
- **Email.** If you would like to ask questions about your property or proposed apportionment prior to the Day of Review, please email drinfo@kentcountymi.gov and we will provide you information through email.
- **Telephone.** If you wish to speak with a staff member of the Drain Commissioner’s Office about your property or the proposed apportionment, please call (616) 632-7912.
- **Special Access.** Persons with disabilities needing accommodations for effective participation in the Day of Review should contact the Drain Commissioner’s Office at the number noted above (voice) or through the Michigan Relay Center at 7-1-1 (TDD) at least 24 hours in advance of the Day of Review to request mobility, visual, hearing or other assistance.

On the Day of Review:

- The Drain Commissioner, engineers and/or other staff members will be available to assist individuals throughout the day.
- The computation of costs for the Drain will also be available at the Day of Review and will be on the Drain Commissioner’s Office website. Drain assessments are collected in the same manner as property taxes and will appear on your winter tax bill. If drain assessments are being collected for more than one (1) year, you may pay the assessment in full with any interest to date at any time and avoid further interest charges.

After the Day of Review:

You may appeal the Drain Commissioner’s decision to revise the district boundaries to the Kent County Circuit Court within ten (10) days, and you may also appeal the determination of apportionments to the Kent County Probate Court within ten (10) days



FAQs

FREQUENTLY ASKED QUESTIONS

Day of Review of Drainage District Boundaries and Review of Apportionments

What is a Drainage District?

A drainage district is the land area that benefits from the drain. The drainage district makes up the watershed that contributes water to the drain. The public entities and properties within the drainage district pay for maintenance and improvement of the drain.

What is a Day of Review of District Boundaries?

The Michigan Legislature passed a law in 2013 to allow revisions to historical drainage district boundaries that require updating as recommended by a licensed engineer.

Property owners can review changes with the Drain Office staff during the Day of Review. The proposed boundary revisions can be found on the map on notice and in more detail at the Kent County Drain Commissioner's website.

Why are the boundaries being revised?

Revisions are recommended because the historic drainage district boundaries no longer accurately reflect the current watershed of the drain.

What is a Day of Review of Apportionments?

A Day of Review of Apportionments provides an opportunity for property owners to review the percent of benefit of the drain assigned to properties and public entities. The apportionments of benefit to properties are based on acreage, land use, and other factors. The apportionments determine the assessment amount for each property and public entity for costs of construction or maintenance.

Why are the apportionments being revised?

The apportionments are being revised to more accurately reflect the percentage of benefit that each property and public entity receives from the drain.

If a parcel is on the outer boundary of a drainage district, only that portion of the parcel within the drainage district will be assessed.

Why did I receive a notice?

Notices went out to the public entities and the following property owners:

- ***Properties being added to the Drainage District.*** The properties were not previously in the drainage district, but the engineers determined that the properties are within the drain's watershed.
- ***Properties currently in the Drainage District and proposed to remain in the Drainage District.*** There is no change in terms of boundaries for these properties.

When do I receive my drain assessment?

Drain assessments are included on your Winter Tax bill and are only levied when costs are incurred for the drain. Assessment amounts vary from year to year.

What is my assessment amount?

Estimated assessment amounts are included in your notice and also available at the Day of Review, online or by calling (616) 632-7910

Do I have to attend/participate in the Day of Review?

You are not required to attend the Day of Review.

How can I get more information?

Visit the Kent County Drain Commissioner's website at www.accesskent.com/Departments/DrainCommissioner or call (616) 632-7910.

Can I submit questions or comments prior to the Day of Review ?

Questions and comments prior to the meeting can be submitted by email at DRInfo@kentcountymi.gov by calling (616) 632-7910